



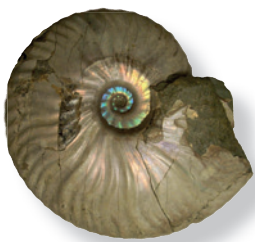
# Iride

**DID** PLUS  
our light your healthcare

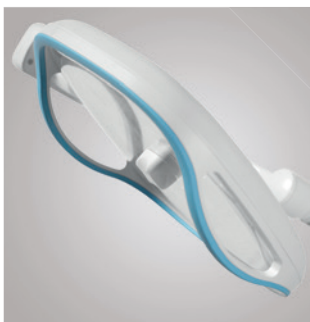


# Iride, the success in the evolution

*"The colors of the rainbow so pretty in the sky / Are also on the faces of people passing by"  
(Somewhere over the rainbow, Louis Armstrong)*



"Elidoceras", iridescent ammonite coming from Jurassic rocks of Madagascar (180 millions years ago). The ammonites are cephalopod mollusks appeared around 400 millions years ago and became extinct at the end of Cretaceous period (65 millions years ago). Presenting a wide variety of shapes and dimensions, the ammonites spread in different seas. Protected by a shell enshrouded generally in a spiral form, they were similar to the actual Nautilus and were provided with a system of internal chambers linked together by a central siphon. Thanks to the osmotic exchange of the animal's internal liquids, the chambers were filled up and emptied out with gas and other liquids. Thanks to this sophisticated "hydraulic system", the buoyancy, the immersion at desired depth as well as the emersion became possible. They represent the standard type of fossils as well as a real success of the evolution ... Iride!





# Iride

Iride is state of the art LED technology for scialytic lamps. Thanks to an innovative system of lenses with 18 LED light sources, Iride provides a beam of light with wide scialytic effect, shadow-free, configurable with two different patterns from 18 to 30 cm in diameter. The light emitted by Iride is white and natural, with a CRI (Ra) of 90 points and a maximum brightness of 60,000 lx, which does not strain the eye and does not detract from operator concentration. To guarantee perfect perception of the illuminated area, Iride provides the use of three different color temperatures: 3.800K, 4.300K, 5.000K. The design of Iride takes into account the aesthetic components without compromising on ergonomics, ease of use and cleaning. The high quality of plastic materials provides strength and resistance to the most common cleaners and hygiene over time, responding to the high standards required by the medical industry. All of these elements make Iride a lamp suitable for the most demanding user.



Iride meets the needs  
of different professionals:

- dentists
- doctors
- podiatrists



Two different light spots



Customisable color temperature



High quality plastics



Handpiece (optional) art. HANDLEIRL



## LIGHT TECHNOLOGY

### Scialytic effect

The effective optical efficiency of the Iride lamp is based on an innovative lens system with 18 LED sources that ensures a beam of light with wide scialytic effect that is shadow-free.



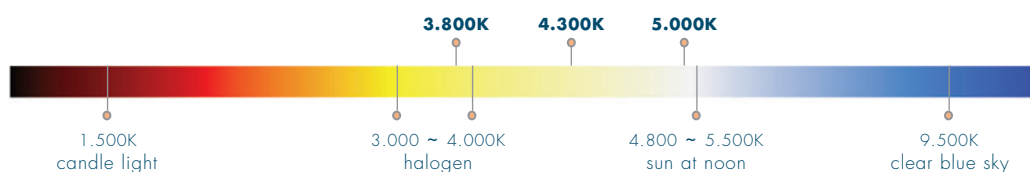
Iride



competitors

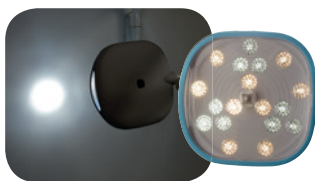
### Colour temperature adjustment

The light beam emitted by Iride is white and natural. For perfect perception of the illuminated area in every situation, the color temperature is adjustable and customisable with three different settings: 3.800K, 4.300K, 5.000K. A CRI factor (Color Rendering Index) of 90 points and maximum brightness of 60,000 lx finally are the guarantee of a lamp that doesn't strain the eyes.



### Customisable light spot size

The innovative lens system with 18 LED sources allows the configuration of two different light spots of 18 and 30 cm in diameter.



18 cm spot



30 cm spot



## RELIABILITY AND LIFE SPAN

### Heat resistant materials, inert to detergents and stable in time

The high quality plastics used for Iride are resistant to temperatures higher than those of normal use. Their chemical composition ensures an inert behavior compared to the most common detergents.

### Long life span, low consumption and lack of noise

LED technology is synonymous with absence of heat and quietness. Dynamic cooling (fan) of the light source is in fact no longer necessary. Iride consumes up to 10 times less than a conventional lamp. The guaranteed life can exceed 50,000 hours.

## DESIGN AND ERGONOMICS

### Handiness

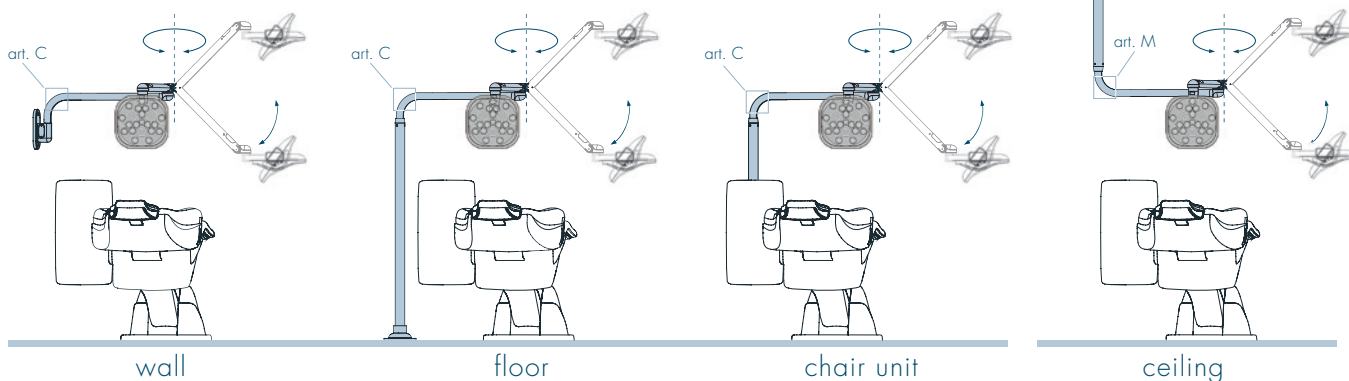
Iride, designed with uncompromising attention to ergonomics and ease of use, is a lightweight accurate lamp, suitable for the most demanding user.

### Customizations

Design also means working with a product close to everybody's needs and suitable with its own lifestyle. Therefore Iride was created with two different spots, the option of adjustment of the color temperature, the possibility of ceiling or dental unit installation and finally a wide range of colors RAL<sup>(1)</sup>.

## INSTALLATION SETS

Mounts and/or adapters to be ordered separately. Request the specific brochure.



## TECHNICAL SPECIFICATIONS

Product	IRIDE
Accordance with	93/42/EEC Class I - EN 60601 ed. 3 Class I
Light beam dimension	Two adjustments available: 18 and 30 cm (diameter)
Power	25 W
Light intensity at 100 cm	Five adjustments available: min 6,000 - max 60,000 lx
CRI (Ra)	90
LEDs	18
Colour temperature	Three adjustments available: 3.800K, 4.300K, 5.000K
Ultra violet radiation	no
Infrared radiation	no
Fan	no
Life cycle	~ 50.000 hours

## CONFIGURATIONS

Art.	Application field	Art.	Installation set	Art.	Voltage	Art.	Switch	Art.	Colour
A	Dental, medical, podiatry	C	Chair unit	18L	100~250 Vac, 50/60Hz	N	Without touch switch	9002	RAL 9002 (white)
		M	Ceiling					9003	RAL 9003 (white)
								9010	RAL 9010 (white)
								RAL	Customized

IRIDE	+	A	+	M	+	18L	+	N	+	9010	=	IRIDEAM18LN9010
-------	---	---	---	---	---	-----	---	---	---	------	---	-----------------

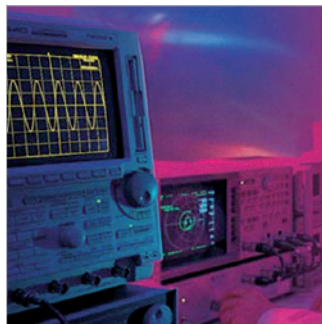


### HOW TO ORDER

Specify the required configuration by adding the single articles. **IRIDEAM18LN9010** is the complete code required to order an **Iride** scialytic lamp with: bright spot (**A**) - ceiling installation (**M**) - LED light with 18 light sources (**18L**) - without touch switch (**N**) - 9010 colour white RAL (**9010**).

### notes

1. RAL (Reichsausschuss für Lieferbedingungen): international chromatic scale.



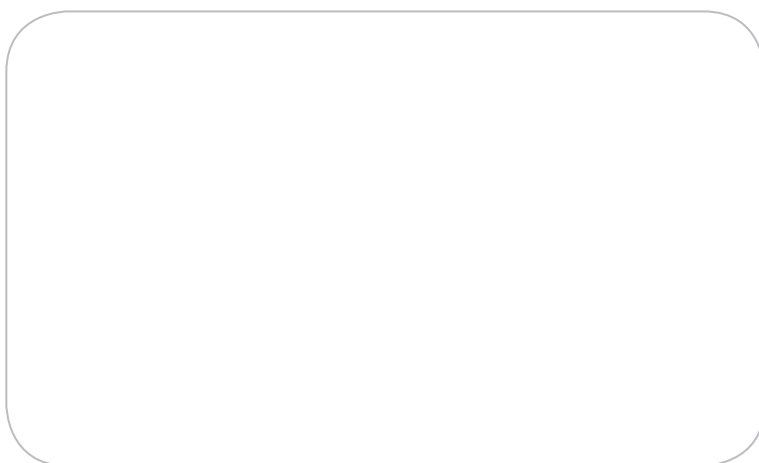
## DID PLUS

DID Plus is an Italian firm involved for years in the development of high-tech components for the dentistry, medical and industrial markets. In 2011 DID Plus was taken over by Calzavara Group and became one of its brands. The new owner radically reorganised operations and management with very positive results for the Group's synergies and the development of innovative product lines. Our mission is to offer customers the skill gained in lighting systems with LED technology, in moving mechanical arms and in industrial components. Our strength lies in customer satisfaction via structured partnerships founded on high standards of quality and service.

---

## CALZAVARA S.P.A.

Founded in 1966 as a sole proprietorship, Calzavara became a public limited company in 1979. The company operates on the domestic and international markets with a consolidated presence in over 30 countries. Telecoms and energy are its traditional target markets thanks also to the natural capability for innovation. It has moved on from the small artisan business of the Seventies to a structured medium-sized firm which can rely on a work force of over 120 employees with a quota of over 20% of graduates. In addition to the location in Basiliano in the province of Udine, Calzavara has sites throughout Italy and sole rights agents and distributors on the relevant foreign markets. Calzavara operates on the TLC market as system integrator, offering a vast range of innovative and traditional services and products. The company also offers turnkey services and innovative systems referred to alternative and renewable energies. In particular in the biogas, photovoltaic and wind power sectors and back-up and storage of energy. Automotive and medical are finally the new frontiers towards which the company has successfully turned.



Via Corecian, 60  
33031 Basiliano (UD) · Italy  
Ph. +39 0432 839910  
[www.didplus.it](http://www.didplus.it)

