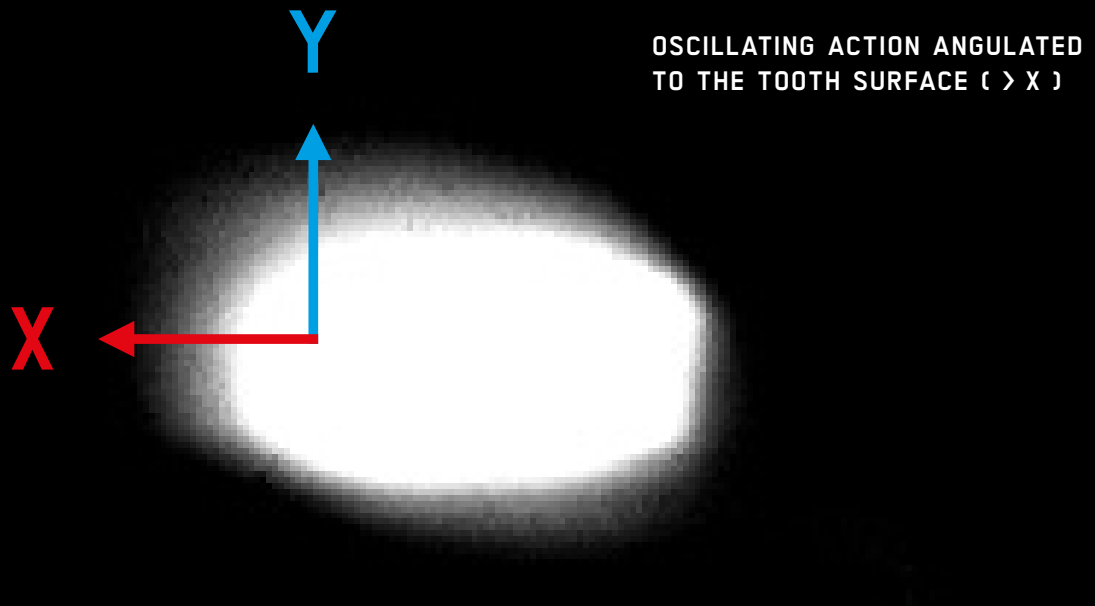


PIEZON®

NO

PAIN

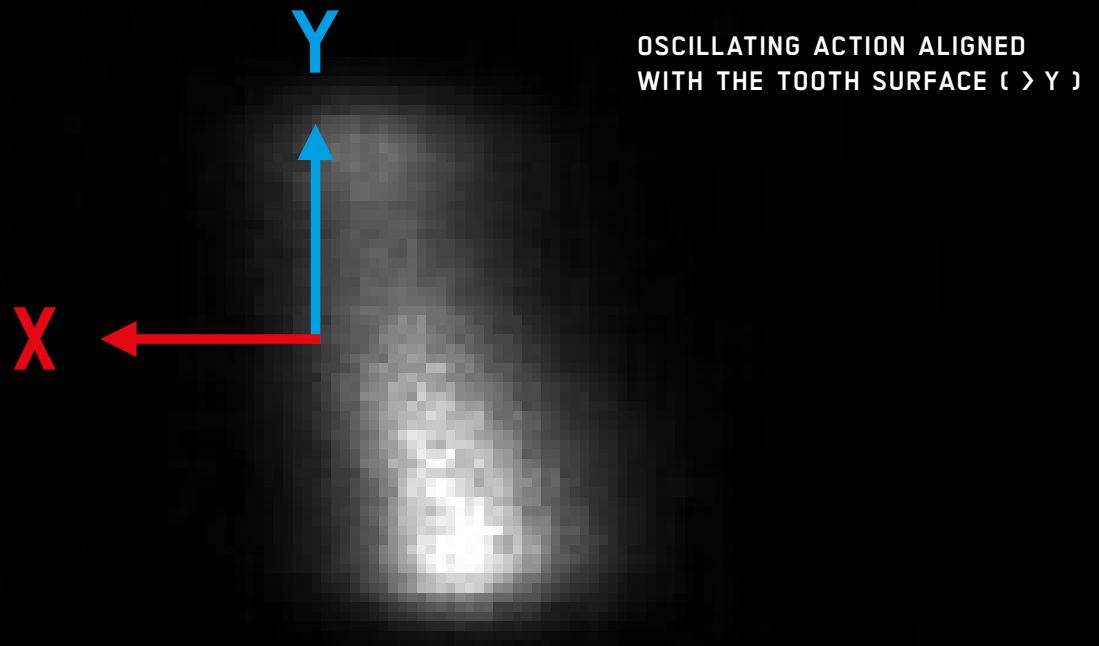
PAIN



FEAR OF PAIN WHEN BEING TREATED IS
THE REASON WHY THREE OUT OF FOUR PERSONS
ARE AFRAID OF SEEING THE DENTIST.
ONE OUT OF FIVE PUTS OFF THE VISIT UNTIL
COMPLICATIONS HAVE SET IN.
AND ONE OUT OF TWENTY REFUSES ANY
TREATMENT DESPITE SEVERE PAIN

NO WONDER WHEN PROPHYLAXIS IS
ALREADY PAINFUL

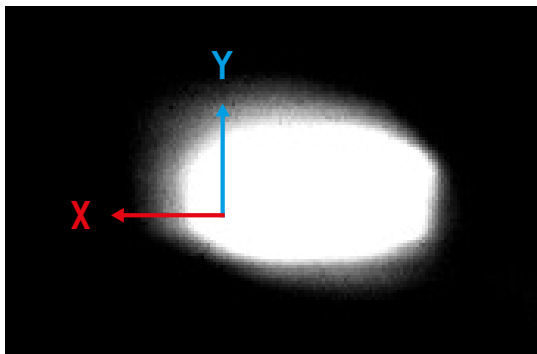
NO PAIN



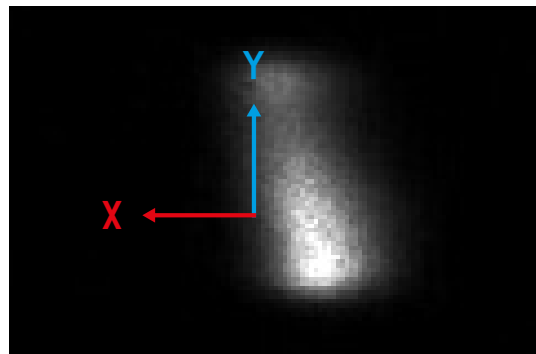
PAINLESS TREATMENT IS THE BEST
SOLUTION TO TAKE AWAY THE FEAR OF SEEING
A DENTIST. IN THE PAST 20 YEARS
THE NUMBER OF PATIENTS GOING FOR A DENTAL
CHECK-UP HAS RISEN TO 70 PERCENT.
IN OTHER WORDS, THEY WON'T WAIT UNTIL
THEY HAVE PROBLEMS

EVEN BETTER WHEN PROPHYLAXIS IS
PRACTICALLY PAINLESS

NOW IN BLACK AND WHITE → CLINICAL EVIDENCE FOR THE SUPERIORITY OF THE ORIGINAL PIEZON® METHOD



UNCONTROLLED → Other manufacturer –
Other instrument – Marked oscillating action
angulated to the tooth surface (> X)



CONTROLLED → Original Piezon® Method –
EMS Swiss Instruments^{PM} – Oscillating action
clearly aligned with the tooth surface (> Y)

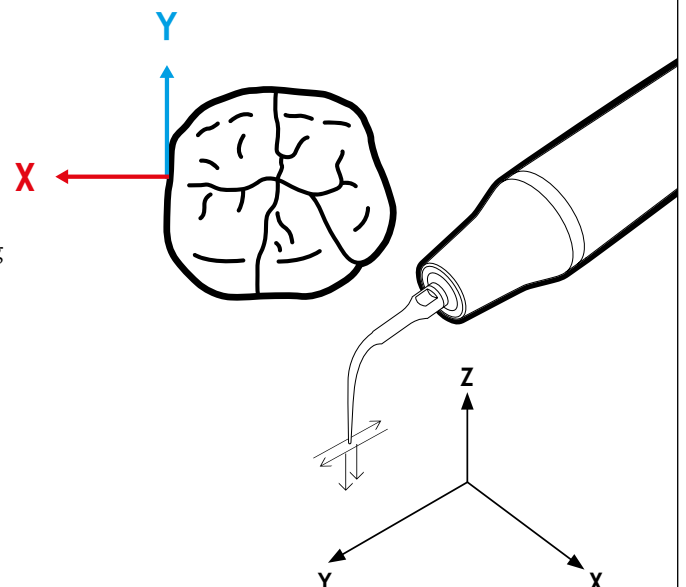
Janner A., Oscillating action of different sonic and ultrasonic tips and recommendations for the clinical application on patients –
Dissertation, Ludwig-Maximilians-Universität, Munich, Germany, 2003

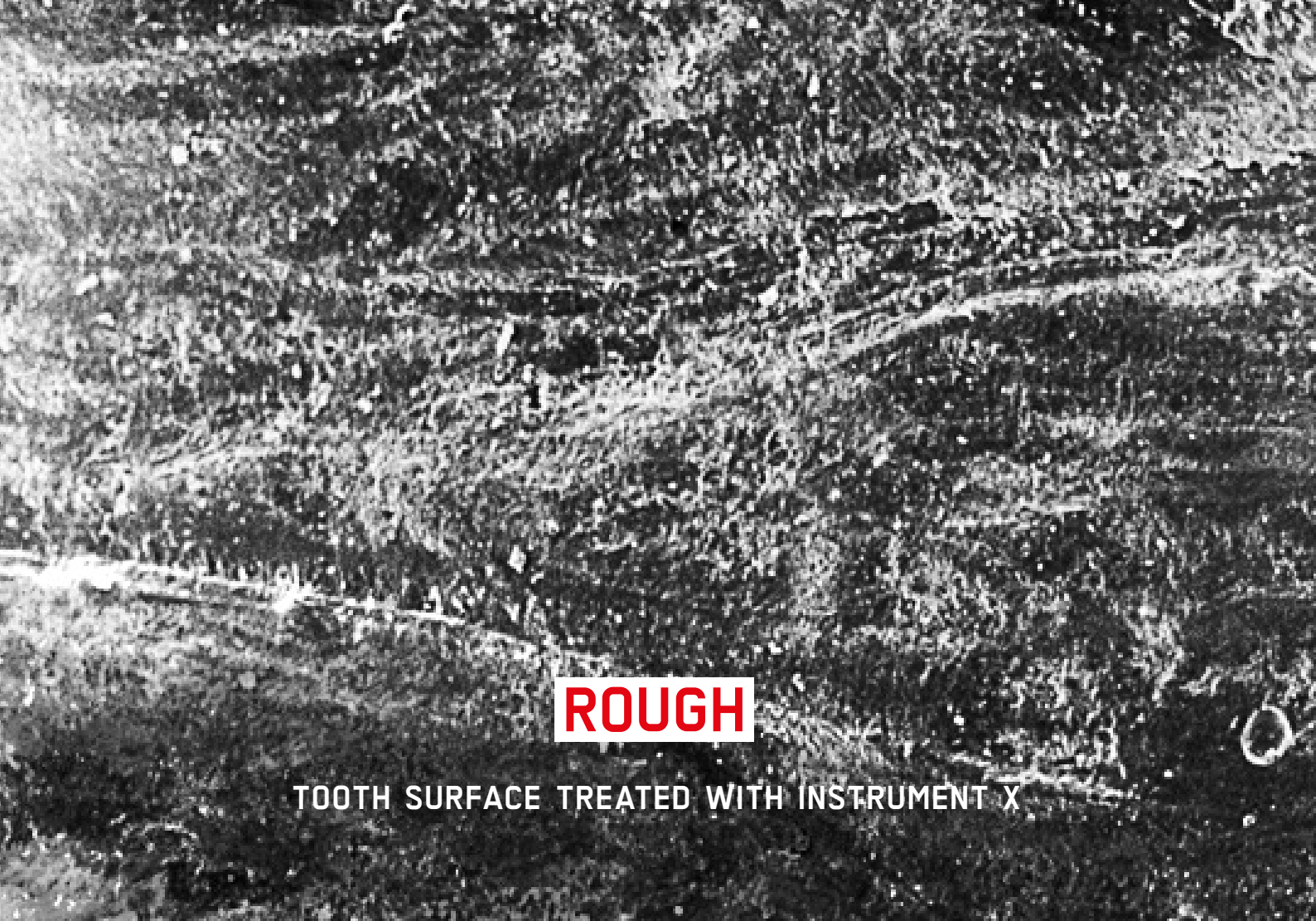
Photos (above): Dr. A. Janner

Photos (right): Schmage P., Schultz Y., Platzer U., Maisch S., Nergiz I., University of Hamburg, Germany

THE ORIGINAL PIEZON® METHOD DELIVERS CONTROLLED OSCILLATING ACTION ALIGNED WITH THE TOOTH SURFACE →

- > Gentle treatment for uniform surface roughness with minimum abrasion of tooth surface
- > Easy to use due to clearly linear oscillating action and intelligent feedback control
- > Efficient delivery due to 32,000 movements per second as well as cavitation and acoustic streaming
- > Maximum retention of the oral gingival epithelium and virtually painless treatment due to optimized instrument movements





ROUGH

TOOTH SURFACE TREATED WITH INSTRUMENT X



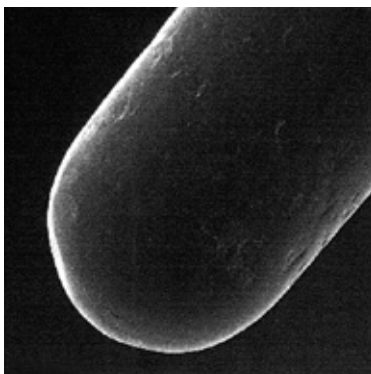
SMOOTH

TOOTH SURFACE TREATED WITH THE ORIGINAL PIEZON[®] METHOD
AND EMS SWISS INSTRUMENTS^{PM}

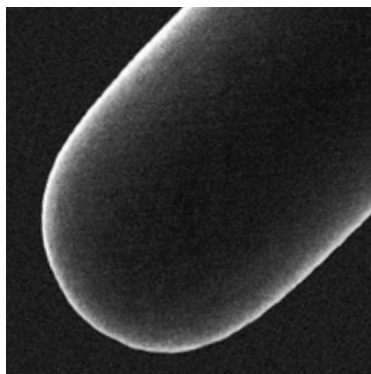


ORIGINAL AND COPIES →

THE ULTRAFINE SURFACES OF EMS SWISS INSTRUMENTS^{PM} SHOW
THE DIFFERENCE IN MATERIAL AND MANUFACTURING →

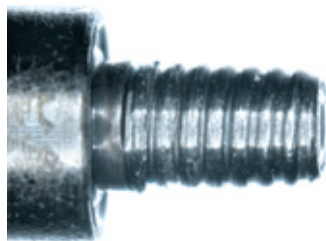


COPY →
Generic ultrasonic device

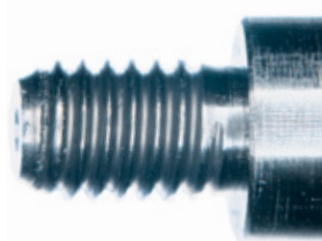


ORIGINAL →
EMS Swiss Instruments^{PM}

- > Premium-quality biocompatible surgical steel
- > Reproducible oscillating action due to highly precise manufacturing
- > Ultrafine instrument surface due to special polishing process for a long life span



DAMAGED → Generic ultrasonic instruments overload the sonotrode and severely shorten its life span



UNDAMAGED → EMS Swiss Instruments^{PM} spare the sonotrode and guarantee years of use

SONOTRODE OF THE ORIGINAL PIEZON® HANDPIECE MADE OF PREMIUM TITANIUM → A WASTE FOR IMITATIONS

- > As a rule, copies are made of steel that is inappropriate – they have the same effect as a thread cutter and damage the valuable handpiece (loss of warranty!)
- > Original EMS Swiss Instruments^{PM} are the result of on-going development with the expertise of the inventor – in perfect harmony with the Original Piezon® Method, from piezoceramic drive and handpiece to instrument tip – perfectly matched

ORIGINAL PIEZON® METHOD

EMS SWISS INSTRUMENTS^{PM}



EMS SWISS INSTRUMENT PS

[> magnified 7 times]

“EMS Perio slim tip had
best interproximal
and subgingival access”

CRA (Clinical Research Associates)
Newsletter, USA

EMS SWISS INSTRUMENTS^{PM} →

UNDOUBTEDLY THE WORLD'S MOST COPIED ULTRASONIC INSTRUMENTS

PIEZON® MASTER 700
PERFECTION

NEW → PIEZON® MASTER 700

ORIGINAL PIEZON® METHOD
IN THE LEAD WITH
PIEZON® NO PAIN TECHNOLOGY

- VERSATILE
- SIMPLE
- HYGIENIC

THE NEW PIEZON®





**NO
PAIN**

NO COMPROMISE → COMPLETE

1 ORIGINAL PIEZON® HANDPIECE WITH LED

- > Optimum visibility due to circular light emission
- > Lightweight and ergonomic
- > Metal cap for controlled precision
- > Sterilizable up to 135° C
- > Two handpieces for double efficacy

2 PIEZON® NO PAIN TECHNOLOGY

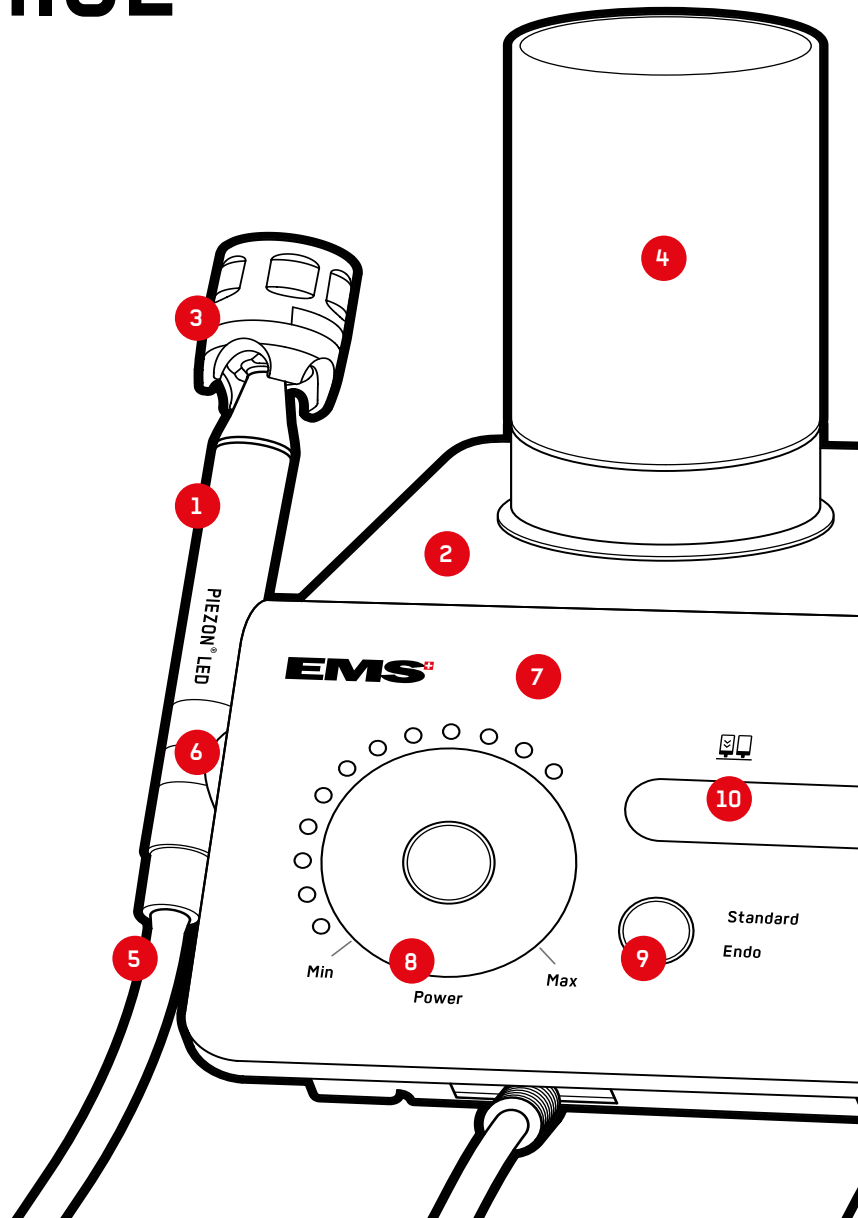
- > Optimum instrument movements
- > Intelligent feedback control
- > Precise treatment results
- > Utmost patient comfort

3 EMS SWISS INSTRUMENTS^{PM}

- > Each with CombiTorque® for steady handling
- > Broad scope of application
- > Swiss-quality development and manufacturing

4 LIQUID CONTAINER

- > Volume 350 or 500ml
- > UV ray-resistant
- > 100ml markings for easy filling
- > Easy to install

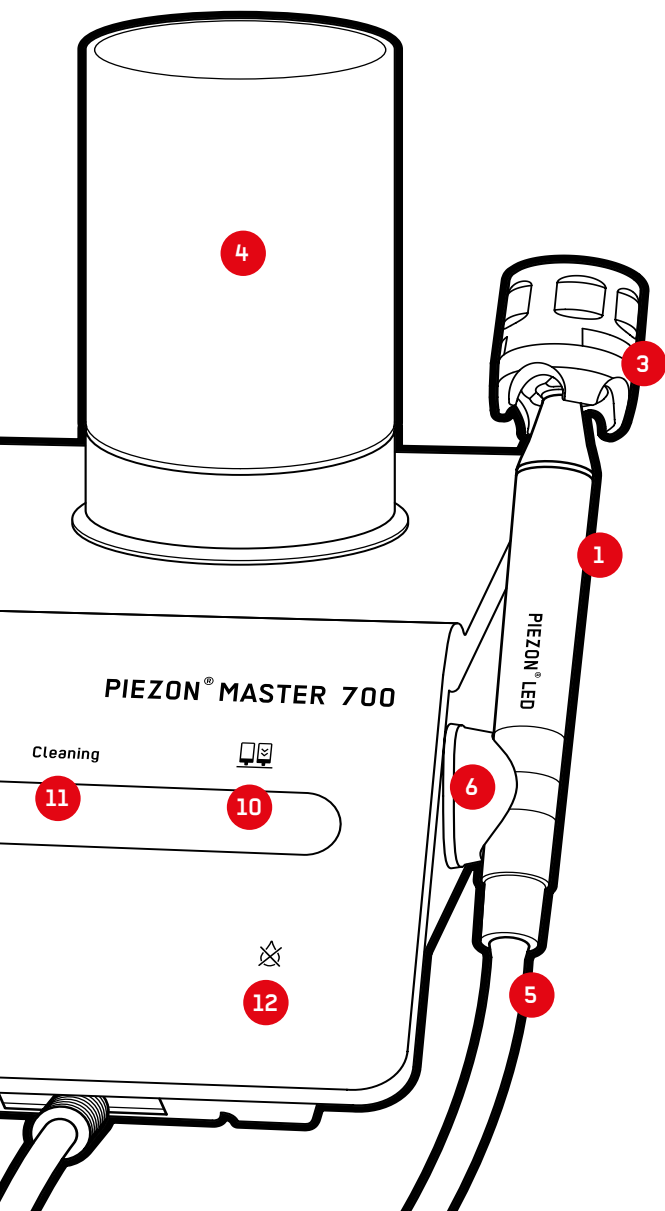


PRACTICAL

- > Connecting cord for operating two EMS units with one foot control

CONTROLLED

- > Multifunctional foot control for controlled work with integrated boost function



5 CORD

- > Direct control of flow amount
- > Removable from unit and handpiece
- > Flexible and long-lasting

6 INSTRUMENT HOLDER

- > Magnetic, removable

7 TOUCH PANEL

- > Fast and precise settings
- > Easy-to-read controls
- > Hygienic

8 POWER

- > LED settings in 17 increments for individual clinical requirements
- > Clear and easy to understand

9 WORKING MODE

- > Choice of Standard and Endo
- > Automatic memory function

10 BOTTLE SELECT

- > Easy switching between two solutions
- > Selected bottle lights up

11 CLEANING MODE

- > Automatic
- > Cleaning progress display

12 DRY WORK CONTROL LED

- > Illuminates when used without liquid



RELIABLE

- > CombiTorque® for safe, hygienic exchange and storage of EMS Swiss Instruments^{PM}



FLEXIBLE

- > Magnetic instrument holder for all metal surfaces



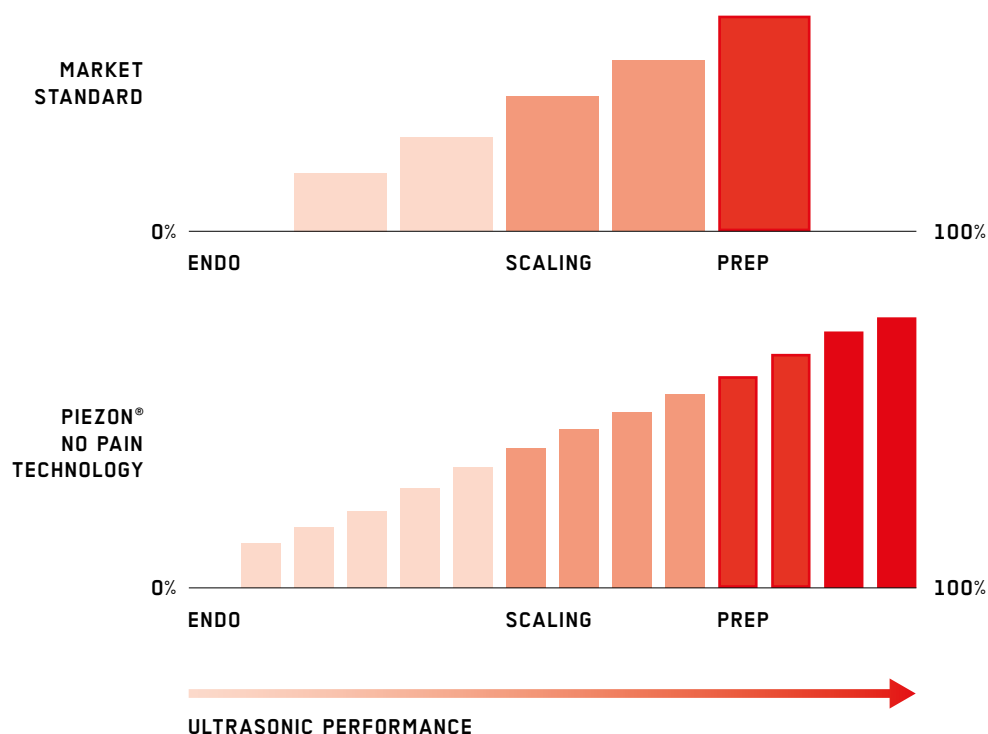
MOBILE

- > CART with embedded power supply lead

PIEZON® NO PAIN TECHNOLOGY → EMS SWISS INSTRUMENTS^{PM}

A MIX OF INTELLIGENT TECHNOLOGY AND
UNEQUALED PRECISION MAKES THE DIFFERENCE

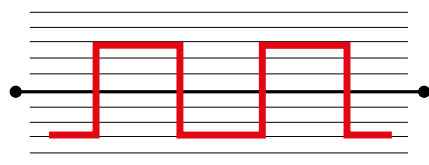
DIFFERENTIATED POWER
→ MULTIPLE TREATMENT APPLICATIONS



- > Gentle and comfortable for endo applications
- > Intelligent power output feedback control
- > More power for restorative procedures
- > Optimum instrument control and efficiency in all applications

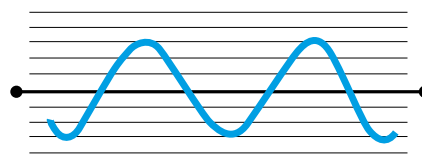
UNIFORM POWER OUTPUT → PLEASANT TREATMENT

MARKET
STANDARD



AGGRESSIVE ANGULATED SIGNAL

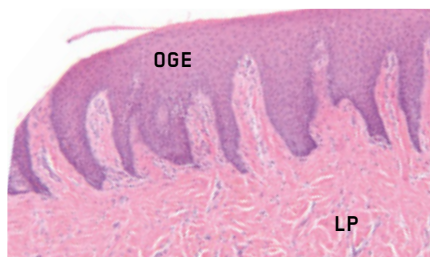
PIEZON®
NO PAIN
TECHNOLOGY



GENTLE SINUS SIGNAL

- > No irritation due to aggressive power output or noise
- > Almost no pain sensation due to gentle sinus signal of Piezon® No Pain technology

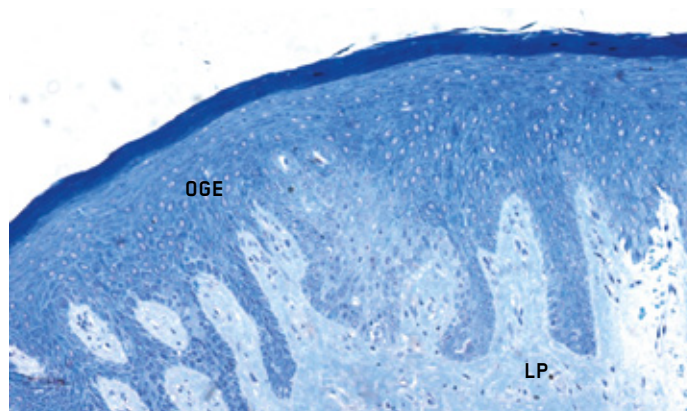
OPTIMUM INSTRUMENT MOVEMENTS → UNDAMAGED EPITHELIUM



Negative control specimen ★
→ **BIOPSY SCORE 1**



Epithelium following treatment
with hand instrumentation ★
→ **BIOPSY SCORE 4**



Epithelium following treatment with Piezon® Master 700
and EMS Instrument PS → **BIOPSY SCORE 1**

- > No lesion of the oral gingival epithelium and largely painless treatment thanks to optimum linear instrument movements between tooth and epithelium

BIOPSY SCORES

- 1 NO LESION**
- 2 MINOR LESION** Basement membrane intact
- 3 MEDIUM LESION** Basement membrane damaged
- 4 SEVERE LESION** Basement membrane destroyed

OGE = ORAL GINGIVAL EPITHELIUM
LP = LAMINA PROPRIA

★ Petersilka G., Faggion Jr. C.M., Stratmann U., Gerss J.,
Ehmke B., Haerberlein I., Flemmig T.F. –
Journal of Clinical Periodontology (Issue 4, 2008)

PIEZON® MASTER 700

COMFORT

**PIEZON® NO PAIN TECHNOLOGY MATCHED TO
ORIGINAL PIEZON® HANDPIECE LED AND EMS SWISS INSTRUMENTS^{PM}
→UTMOST PATIENT COMFORT**



> Piezon® No Pain module –
integrated in the new Piezon® Master 700



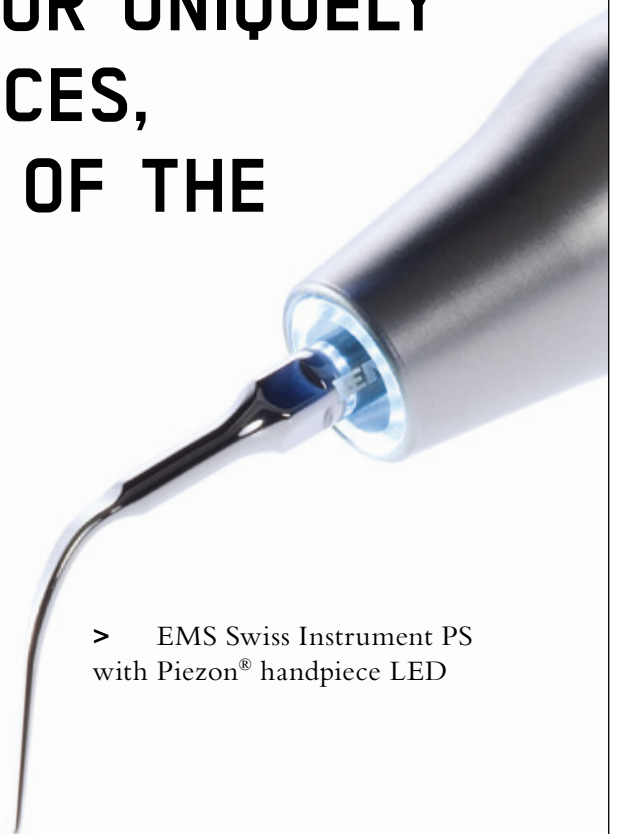
> Original Piezon® handpiece LED –
circular light emission

**LINEAR OSCILLATING ACTION ALIGNED
WITH THE TOOTH SURFACE AND
DELIVERED BY UNIQUE EMS SWISS
INSTRUMENTS^{PM} COMBINES WITH THE
SINUSOIDAL POWER OUTPUT OF
INTELLIGENT PIEZON® NO PAIN
TECHNOLOGY PERFECTLY MATCHED
TO THE ORIGINAL PIEZON® HANDPIECE
FOR UNPARALLELED PRECISION →**



> EMS Swiss Instruments^{PM} – genuine
only with laser-etched EMS logo

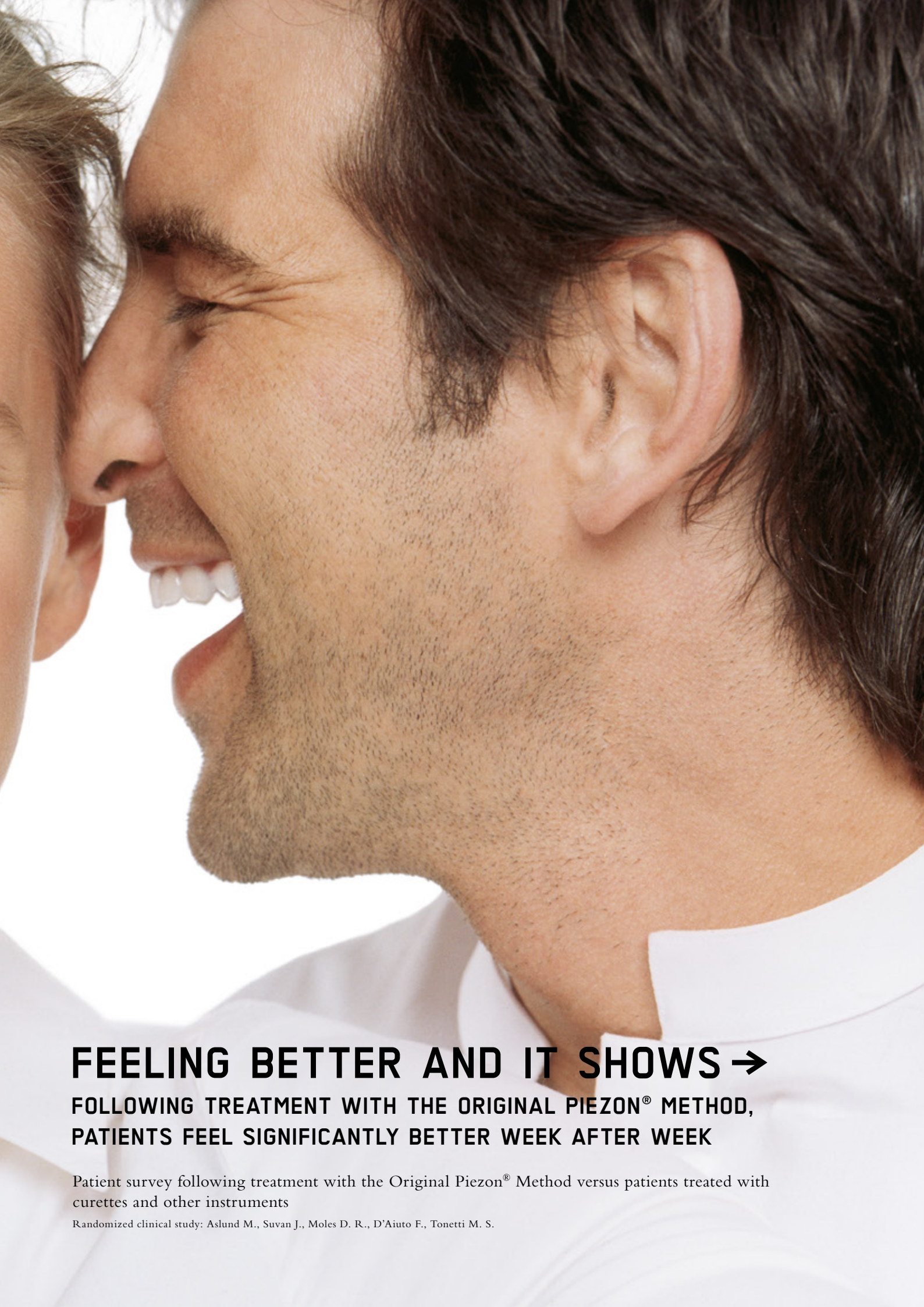
**THE RIGHT FORMULA FOR UNIQUELY
SMOOTH TOOTH SURFACES,
MAXIMUM PROTECTION OF THE
GUMS AND VIRTUALLY
PAINLESS TREATMENT**



> EMS Swiss Instrument PS
with Piezon[®] handpiece LED

ANTI-PAIN FORMULA





FEELING BETTER AND IT SHOWS →
FOLLOWING TREATMENT WITH THE ORIGINAL PIEZON® METHOD,
PATIENTS FEEL SIGNIFICANTLY BETTER WEEK AFTER WEEK

Patient survey following treatment with the Original Piezon® Method versus patients treated with curettes and other instruments

Randomized clinical study: Aslund M., Suvan J., Moles D. R., D'Aiuto F., Tonetti M. S.

MANY ARE OUT OF LINE → BUT NOT THE ORIGINAL PIEZON® METHOD

WHEN INSTRUMENTS ARE OUT OF STEP →

- > Random instrument movements in the form of eights, double eights or twisted curves hit the tooth and gingival surfaces in an uncontrolled fashion. It is not difficult to imagine that such movements cause considerable pain to the patient
- > Anesthesia is often the only method of choice to protect the patient from the painful side effects of plaque removal. As a rule with the unpleasant effect to have to endure the brief but sharp pain of the injection needle and several hours of local numbness
- > Yes, there are manufacturers who will sell the treatment unit with an anesthetic package. The message is clear: this will hurt. Not exactly what's needed to achieve greater recall success

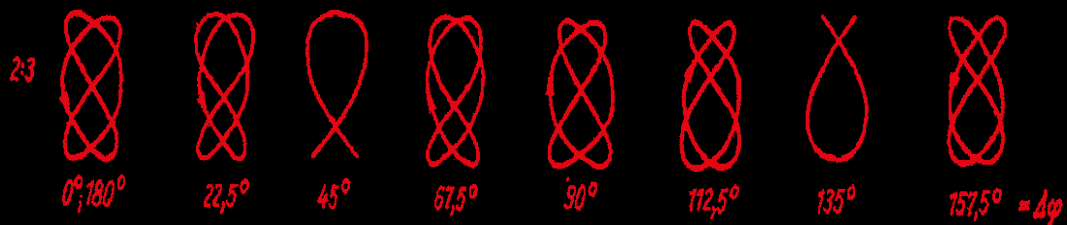
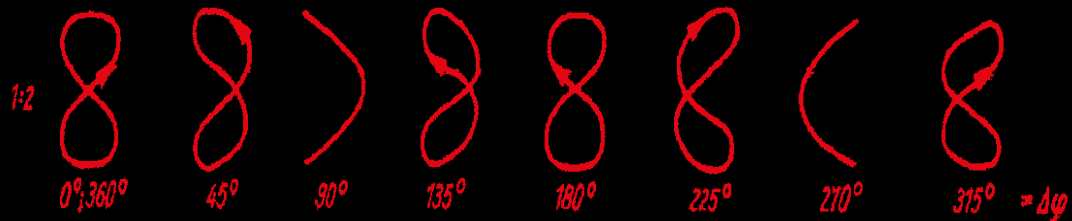
WHEN INSTRUMENTS KNOW HOW TO MOVE →

- > Precisely predetermined instrument movements oscillate in a controlled manner between the tooth and gums. The connecting tissue is protected from injury or destruction, the embedded nerves remain untouched and the patient hardly feels any discomfort
- > The Original Piezon® Method is a truly effective and largely painless way to remove plaque. The patient experiences the treatment as extremely pleasant, is motivated for regular recall visits, and readily refers the practice to others

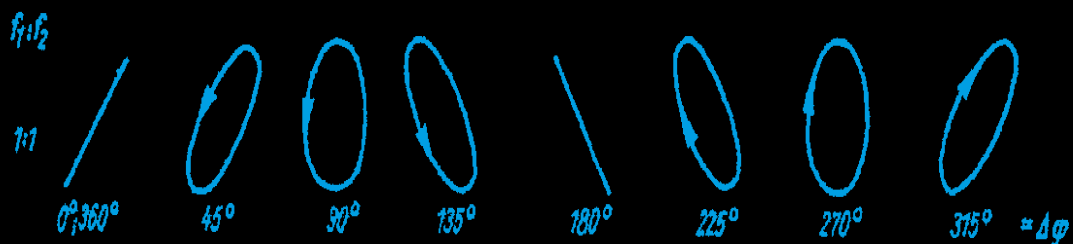
**EARN THE ENTHUSIASM
OF YOUR PATIENTS**

DANCE OF THE INSTRUMENTS

MOVEMENTS THAT CAUSE PAIN



MOVEMENTS THAT ARE COMFORTABLE



EMS-SWISSQUALITY.COM

LISSAJOUS FIGURES

> Circles, ellipses, eights, double eights and twisted curves – named after mathematician J.A. Lissajous



EMS-SWISSQUALITY.COM

EMS
ELECTRO MEDICAL SYSTEMS SA
Chemin de la Vuarpillière 31
CH-1260 Nyon

Tel. +41 22 99 44 700
Fax +41 22 99 44 701
welcome@ems-ch.com
www.ems-dent.com