

AIRFLOW® PLUS POWDER

►AIRFLOW® PLUS Powder is a High-Tech powder which remove biofilm and early calculus in a minimally-invasive way from all types of surfaces:

- Enamel
- Dentine
- Soft tissue
- Tongue and palate
- Primary teeth
- Orthodontic appliances
- Implant surfaces
- Restorations

No pain, no salty taste.
Your patients will love it.



Innovation
1st Prize*

► The Erythritol based PLUS Powder can be applied supra- and subgingivally. The particle size of PLUS Powder is only 14µm.



4 x 120 g = 480 g

REF DV-082/A

ONE POWDER ONLY

FOR 90% OF ALL CASES



OPTIMAL COMFORT
MINIMALLY INVASIVE
MAXIMALLY PREVENTIVE

TEETH

- ▶ Primary and permanent teeth
- ▶ Interdental spaces
- ▶ Crowded teeth
- ▶ Exposed dentine
- ▶ Pits and fissures
- ▶ Demineralized enamel

CARIES MANAGEMENT

- ▶ Before caries detection
- ▶ Before sealing
- ▶ Before fluoridation

SOFT TISSUES

- ▶ Sulcus
- ▶ Shallow pockets up to 4mm
- ▶ Deep pockets >4 to 9mm
- ▶ Tongue and palate

ORTHODONTICS

- ▶ Orthodontic brackets
- ▶ Patients with Invisalign

AESTHETIC DENTISTRY

- ▶ Crowns and veneers
- ▶ Before placing restorations
- ▶ Before bleaching

IMPLANTS

- ▶ Peri-implant sulcus
- ▶ Deep peri-implant pockets.



AIRFLOW® POWDER CLASSIC ► COMFORT

On enamel ONLY

► Our sodium bicarbonate powder now features a new formula: the AIRFLOW® CLASSIC Comfort with 40µm mean particle size for enhanced comfort.
No salty taste.



- 40µm
- Sodium bicarbonate



Lemon flavor

4 x 300g = 1200g

REF DV-048/A/LEM



Cherry flavor

4 x 300g = 1200g

REF DV-048/A/CHE



Mint flavor

4 x 300g = 1200g

REF DV-048/A/MIN



Neutral

4 x 300g = 1200g

REF DV-048/A/NEU



Tutti frutti

4 x 300g = 1200g

REF DV-048/A/TUT

AIRFLOW® GLYCINE POWDERS



Subgingival + supra-
gingival for biofilm
removal only.

- ▶ 25µm
- ▶ Glycine

▶ Historically the first subgingival AIRFLOW® Powder.
No salty taste.



4 x 120g = 480g

REF DV-070/A



- ▶ 65µm
- ▶ Glycine

▶ Supragingival powder for enamel and hybride composites.
No salty taste.



4 x 200g = 800g

REF DV-071/A

ONLY USE EMS POWDERS!

► EMS powders are much less abrasive than traditional mechanical debridement techniques such as rubber cups and handscaling.

We recommend to use AIRFLOW[®] and PERIOFLOW[®] first, followed by PIEZON[®]. GBT: the minimally invasive way for Professional Mechanical Plaque Removal (PMPR).

► As part of the GBT disclosing phase, coloration also minimizes AIRFLOW[®] abrasion. No more color signifies that all biofilm has been removed: the objective of AIRFLOW[®] is achieved, to preserve the integrity of dental tissues.

⚠ EMS devices have been designed and tested for exclusive use with EMS prophylaxis powders.

! ONLY USE EMS POWDERS



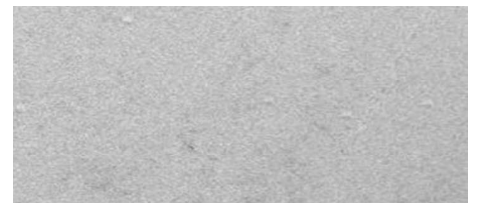
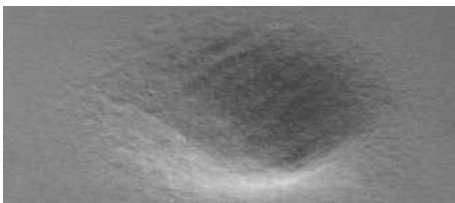
Barnes' study



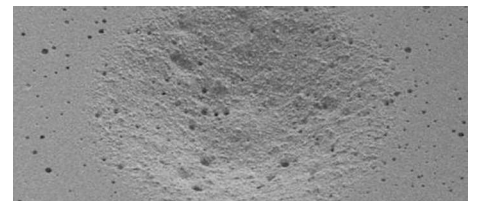
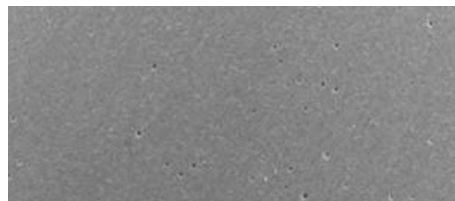
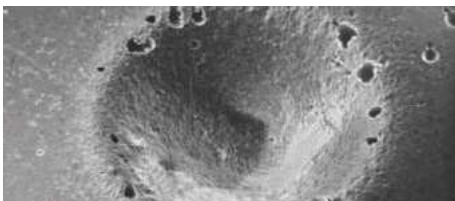
OSSPRAY
CALCIUM SODIUM
PHOSPHOSILICATE¹

EMS AIRFLOW[®] PLUS
POWDER ERYTHRITOL²

EMS SODIUM
BICARBONATE³



EFFECT OF 5 SEC AIR POLISHING ON HUMAN ENAMEL



EFFECT OF 5 SEC AIR POLISHING ON GLASS IONOMER

1. Barnes CM, et al. J Clin Dent 2014;25:76-87. | 2. For AIRFLOW[®] PLUS Powder complimentary tests have been submitted to the J Clin Dent (Barnes CM, et al.). | 3. Barnes CM, et al. J Clin Dent 2014;25:76-87. In the study by Barnes, J Clin Dent 2014, the EMS sodium bicarbonate had a particle size of 65 µm. New Powder AIRFLOW[®] CLASSIC Comfort has 40 µm particle size, for more smoothness and patient comfort.

ONLY USE THE ORIGINAL

RECOMMENDED



OTHER EMS POWDERS

Name		PLUS	CLASSIC COMFORT	CLASSIC	SOFT	PERIO
Ref		DV-082	DV-048	DV-048/ LEM/65	DV-071	DV-070
Flavor		NEUTRAL	LEMON MINT CHERRY NEUTRAL	LEMON	NEUTRAL	NEUTRAL
Composition		ERYTHRITOL	SODIUM BICARBONATE	SODIUM BICARBONATE	GLYCINE	GLYCINE
Particle size		~14µm	~40µm	~65µm	~65µm	~25µm
pH		~7	~8.1	~8.1	~6	~6
Teeth	Stains and early calculus	✓	✓	✓	✓	✗
	Enamel	✓	✓	✓	✓	✓
	Enamel white spots	✓	✗	✗	✗	✓
	Pits and fissures	✓	✗	✗	✗	✗
	Dentine	✓	✗	✗	✗	✓
Soft tissues	Gingiva	✓	✗	✗	✗	✓
	Tongue and palate	✓	✗	✗	✗	✓
Restorations	Hybrid composite	✓	✗	✗	✓	✓
	Glass ionomer	✓	✗	✗	✗	✓
Implants	...and peri-implant tissues	✓	✗	✗	✗	✓
Orthodontics	Brackets and appliances	✓	✗	✗	✗	✓



SO-CALLED "EMS COMPATIBLE" POWDERS IN THE MARKETPLACE MAY CAUSE DAMAGE TO ORAL TISSUES AND THE DEVICE. SEE BELOW A DAMAGED AIRFLOW NOZZLE AFTER USE WITH A "COMPATIBLE" POWDER. IF EMS PRODUCTS ARE DAMAGED BY USING "COMPATIBLE" POWDERS THE PRODUCT WARRANTY WILL BE LOST.



Damaged handpiece

WHY MAKE BIOFILM VISIBLE?

- ▶ With GBT we intend to eliminate all the Biofilm, also in the difficult to access areas.
- ▶ If Biofilm is made visible, it is removed much faster with GBT.
- ▶ What you see is what you remove. Color removal = Biofilm removal. Also on soft tissues.
- ▶ The users of hand instruments, rubber cups and “polishing” paste do not like to disclose biofilm as they would need much more time to finish the treatment.
- ▶ The German Stiftung Warentest reported that the conventional prophylaxis only removes 50% of Biofilm in the difficult to access areas.
- ▶ Colored teeth and gums will also motivate the patient to do a better homecare – OHI.



This 14 year old patient has a significant lack of oral hygiene. Disclosing agent reveals massive acidogenic biofilm.

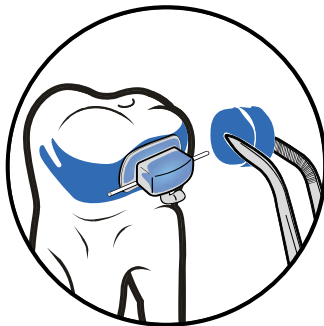
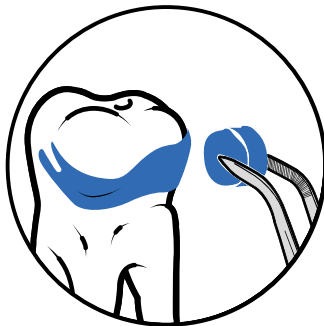
Courtesy, Dr. Gleb Aseev

BIOFILM DISCLOSER



- ▶ A new discloser for Biofilm was developed by EMS.
- ▶ The EMS Biofilm Discloser visibly reveals the presence of early and mature biofilm.

▶ 250 DISCLOSING PELLETS



- ▶ Pre-soaked pellets for 2 tone biofilm disclosure.
Reddish for new biofilm - Blue for mature biofilm

MAKE BIOFILM VISIBLE:

Highlight to patients the disclosed biofilm and their problematic areas. The color will guide the biofilm removal with AIRFLOW® PLUS Powder. Once biofilm is removed, calculus is easier to detect.

1 box with 250 pellets

REF DV-158

AIRFLOW® HANDY 3.0

- Unique AIRFLOW® Handy designed for AIRFLOW® PLUS Powder.



PERIOFLOW®
Nozzle with depth
marks.



Easy Clean
See page 36



Easy Fill

See Accessories p.47